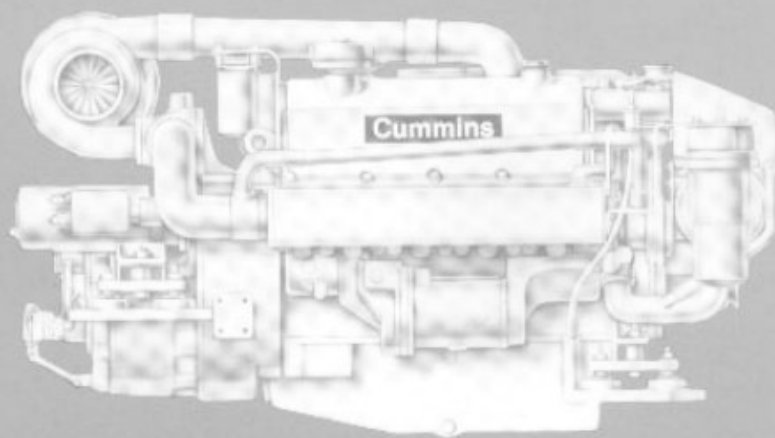




VT-555-M

BIG CAM
MARINE DIESEL



SPECIFICATIONS

Four Stroke Cycle, Turbocharged,
V8 Cylinder Diesel Engine.

Power Ratings

| | | |
|----------------------------------|---------------------------------------|-----------------|
| High Output | 320 bhp | (239 kW) |
| Rated RPM | 3000 | (3000) |
| Fuel Consumption at rated rpm | 17.0 GPH | (64.4 LPH) |
| Intermittent | 270 bhp | (201 kW) |
| Rated RPM | 2800 | (2800) |
| Fuel Consumption at rated rpm | 14.0 GPH | (52.8 LPH) |
| Bore and Stroke | 4 $\frac{1}{8}$ x 4 $\frac{1}{8}$ in. | (117 x 105 mm) |
| Displacement | 555 cu. in. | (9.1 L) |
| Oil Pan Capacity | 5 U.S. gals. | (19 L) |
| Net Weight, Dry† | 2,250 lbs. | (1 023 kg) |
| Installation Diagram Number | 3033919 | |

†With selected accessories and Twin Disc MG-502 marine gear.

AVAILABLE EQUIPMENT

Accessory Drive: 2-groove front and rear accessory drive pulleys. Front pulley also available with 1 $\frac{1}{4}$ inch (44.5 mm) diameter stubshaft.

Air Intake System: Mounted air intake silencer.

Alternator: 12 and 24 volt negative ground and 24 volt insulated with various amperage outputs.

By-Pass Oil Filter: Spin-on cartridge type not mounted.

Cooling System: Mounted engine heat exchanger with aluminum-brass tube bundle. Gear oil cooler mounted in jacket water system. Self priming raw water pump belt driven.

Electrical Accessories: Starter relay and key switches, low oil pressure and high water temperature alarm switches, single element speed switch.

Engine Supports: Marine type, 22 $\frac{1}{2}$, 26, or 32 inch (570, 660, or 810 mm) mounting centers. Adjustable vibration isolators.

Exhaust Accessories: Straight exhaust connection for adapting to 5 inch (127 mm) piping.

Flywheel Housing and Flywheel: SAE 3 with 11 $\frac{1}{4}$ inch (292 mm) O.C. clutch adaptation.

Instrument Panel: Panel includes arrangement for 5 gauges plus starting switches. Not mounted.

Marine Gears: Twin Disc MG506, MG507; Various ratios.

Available Equipment continued on back page.